

LAWRENCE TECH LIBRARY

Portal to information resources –

BB <http://my.ltu.edu/>

<http://library.ltu.edu>

Phone: 248.204.3000

Email: refdesk@ltu.edu

Presented by Gretchen Weiner, Librarian

Location & Hours



Buell Management Building

Lower level

Open Monday – Saturday (except holidays)

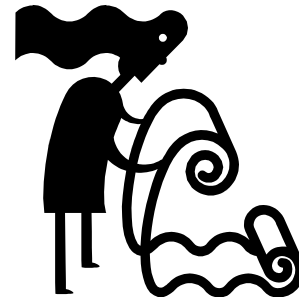
See website for [current hours](#)

START YOUR RESEARCH

- Library home page
- Learn your way around the basics
- TechCat+ ...
- Subscription databases for targeted searching...
- Dissertations...
- Google Scholar...


The screenshot shows the Lawrence Tech Library website. At the top left is the 'Lawrence Tech' logo. A navigation menu on the left includes 'About the Library', 'Research Assistance', 'Services', and 'Library Home'. The main header reads 'LAWRENCE TECH LIBRARY'. Below this is a banner image of a study space with the text 'Find your study space at the Library'. A search bar is prominently displayed with the text 'Search the Library and beyond with TechCat+'. Below the search bar are options for 'Limit results to: Libraries Worldwide' and 'Advanced Search'. A sidebar on the right features a 'facebook' link, a 'Promote Your Page Too' button, and an 'AccuWeather.com' widget for Southfield, MI, showing a sunny forecast with a temperature of 75°F and a RealFeel of 78°F. The main content area lists various resources under three categories: 'Books, eBooks, CDs, DVDs' (including TechCat Classic, Michigan eLibrary, Traditional WorldCat, and Interlibrary Loan), 'Journals, Articles, & Databases' (including Subject Guide to Databases, Alphabetical List of Databases, eJournal Finder, and LibGuides), and 'Additional Digital Content' (including Library Wiki Tips, Mango Languages, Chronicle of Higher Education, and Oxford English Dictionary).

HAVE A PLAN



- Access Library resources from home or campus (authentication through BlackBoard)
- Visit the Library to locate material and ask questions
- Use tools like the eJournal Finder & LinkSource to identify accessible electronic materials
- Not every item identified will be immediately available
- Be prepared to use *interlibrary loan*

KEEPING TRACK

- Learn the *ins* and *outs* of  RefWorks
- Information and links to tutorials are in the Citing & RefWorks LibGuide
- Develop a list of keywords and subject headings
- Develop a list of authors/experts in your field

SEARCHING

- TechCat+, the LTU Catalogue
 - Powerful searching, best starting point
 - Overview with many options
 - Physically & electronically owned,
 - Citation/abstract for items not owned
- MeLCat, Michigan libraries sharing
- Interlibrary Loan

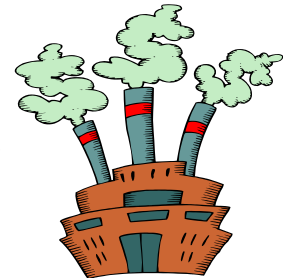


Borrowing

- MeLCat, (books only) Michigan libraries sharing
- Reciprocal Lenders & Infopass
- Michicard

- Interlibrary loan (ILL) (mainly free)

- Purchase – rare, but sometimes the only option
 - Especially for dissertations



Literature Search



Start in TechCat+

- Create & log into both TechCat+ & WorldCat accounts
- Searches many indexes centrally
- Option to select additional indexes
- Results include books, articles, conference proceedings, some are full-text, some not
- Citation only – what are your options?
- Compare to Google/Scholar
 - Credible, authoritative

Literature Review – Part 2

- Subject Guide to Databases
 - Why use?
 - List of recommended starting points
 - *MANAGEMENT*
 - *DISSERTATIONS*
 - *GENERAL*
 - *Other subject specific databases*



DATABASES TO CONSIDER

- Business Source Complete
- Emerald
- IEEE Digital Library
- LexisNexis (includes Hoover's)
- Sage
- **Scopus
- Subject specific databases





How to Search...

- Advanced Search – consider options (Online Help may save time in the end!)
- Labels
 - Keyword, abstract, etc.
- Filters
 - Peer-reviewed, full-text, etc.
 - Date
 - Format
- Wildcards such as ? or *
- Advantages of opening a personal account in a frequently used database

Full Text



- Electronic or print
- **Not everything is on the web**
- **Not everything is free**

-  **LinkSource** – finds available full text from a citation
-  - *eJournal Finder* – list of available electronic journals

Other Resources



Cabell's Dissertations

- [Doctoral Students](#) LibGuide
 - information & tips on searching for & locating dissertations
 - publishing
- Limited number of faculty dissertations in the library collection available for borrowing
- [LTU doctoral dissertations](#) available electronically and in print

ACQUIRING DISSERTATIONS

- *Search for Dissertations*
 - See Doctoral Students LibGuide
 - Start in TechCat+ but limit content by *Thesis / dissertation*
 - Add *WorldCat Dissertations* database
 - Most of these results will be **citation only** not full text
 - Topic should be well defined at this point
 - Some may be available through interlibrary loan
 - Most available for purchase (Dissertation Express or direct)
 - **Or contact author
- *Reality Check*
 - Expect to spend money for information critical to your research
- Dissertation Express

LOCATION LOCATION LOCATION

- On the shelf in the LTU Library
 - Not on campus? Place a request for the book from your library account in TechCat+ & pick it up at the circulation desk
- Not owned by LTU Library
 - MeLCat - place your requests online & pick it up at LTU or use your “home” library
 - Investigate - Reciprocal, Michicard, Infopass
 - ILL requests - directly in TechCat+, online form or in person

Tips on Finding Standards

- Access IEEE standards through [IEEE Digital Library](#) (does not include draft versions)
- Detroit Public Library has a broad collection of current standards (Phone: 313-833-1450)
- [ILI - Info](#) sells most standards, search their “store” for free to determine availability, revisions, etc.
- [ISO](#), [ANSI](#) also sell standards and allow free searching in their online “stores”.

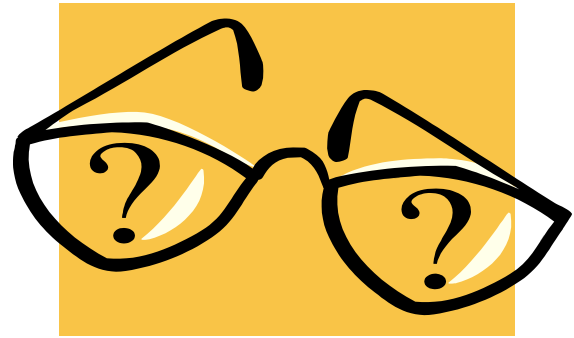
Research Assistance

RefWorks will make your life easier!



- *RefWorks* – bibliographic management tool that helps you collect and manage references; add notes, descriptors, urls to keep track of citations
 - Create bibliographies; share lists
 - Write-N-Cite
 - More information through the library website
 - *Citing Sources & RefWorks* LibGuide

Questions?



- Start at the Library Home Page
- Contact us
 - phone (248.204.3000),
 - email (refdesk@ltu.edu),
 - Research Help Now 24/7 research assistance
- Search suggestions, strategies & tips, in LibGuides